



RESILIENT POWER PUERTO RICO

PROGRAM LOOKBOOK 2018-2022

OUR STORY

In September of 2017, Hurricanes Irma and María struck Puerto Rico within the span of two weeks. Communication systems collapsed, roads were inaccessible for weeks, and the power grid was decimated. This led to one of the largest blackouts in history.

Within days Hurricane María, a group of friends organized to bring power to underserved communities. The mission was to deploy solar energy systems in towns most impacted by the storm. Leveraging an extensive network of groups providing critical services throughout Puerto Rico, they channelled funds and resources directly into the hands of the mutual aid centers leading relief and recovery on the islands.

Today, Resilient Power Puerto Rico is a non-profit 501(c)(3) organization focused on strengthening communities' capacity to respond, rebuild, and prosper in the aftermath of natural disasters. Central to our mission is the belief that uninterrupted access to decentralized, distributed renewable energy essential to bolster the Islands' critical public and social infrastructure systems.

At RPPR we are committed to increase local control of renewable energy assets to build more sustainable and equitable futures for communities across Puerto Rico.

INTERSECTIONALITY IS AT THE HEART OF OUR VALUES

“

Intersectionality: The interconnected nature of social categorizations such as race, class, and gender as they apply to a given individual or group, regarded as creating overlapping and interdependent systems of discrimination or disadvantage.

”

VISION

A Puerto Rico with redundant, reflexive, and inclusive built and social infrastructures where communities can autonomously adapt to build a sustainable and equitable society.

MISSION

RPPR partners with community based organizations and mutual-aid centers to:

Strengthen local access to the knowledge, tools, and resources necessary to create sustainable and equitable community development.

Democratize the management of climate adaptation assets.

Increase the availability and accessibility to affordable, renewable, and decentralized energy.

OUR VALUES

1 EQUITY

We foster local control of resources for recovery, climate adaptation, and sustainable economic development.

2 INCLUSIVENESS

We engage across diverse geographical areas and knowledge bases, integrating underrepresented and marginalized groups and communities.

3 GENDER-RESPONSIVENESS

We promote talent, initiatives, and projects that reduce gender-based gaps in income and leadership.

4 SUSTAINABILITY

We reduce our current impact on the environment and safeguard resources for future generations.

5 COLLABORATION

We prioritize our partnerships to ensure that our work is aligned with the vision and goals of the communities we work with.

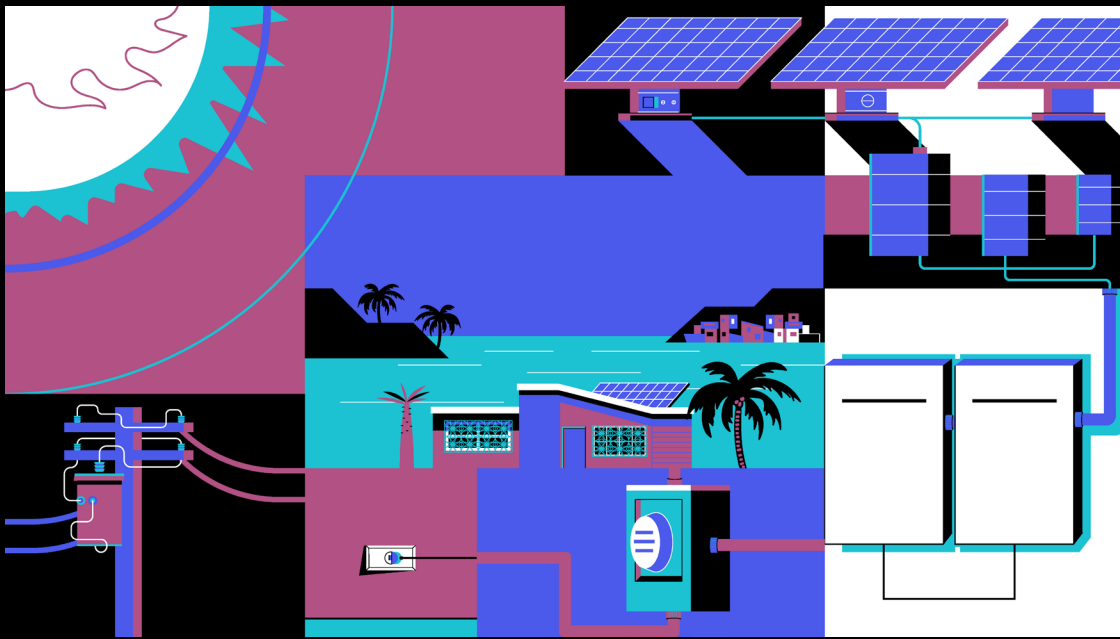
6 ACCOUNTABILITY

We ensure transparency and responsiveness in our processes and use of resources, both internally and with our partners..

7 ADAPTIVITY

We build infrastructures to develop the capacity to critically internalize knowledge and rapidly respond to changing needs.

INVEST



RPPR's investments support communities' and local leaders' control over critical recovery and development resources.

Renewable energy system installations in underserved communities enable continuity in the provision of essential services, reduce unequal access to services, and free up resources for communities to reinvest in their adaptation and development.

COMMUNITY SOLAR ENERGY INITIATIVE

Investing in solar energy
for continuous access to
essential services.

COMMUNITY SOLAR ENERGY INITIATIVE

The Community Solar Energy Initiative engages with community groups that provide services in historically underserved communities. The ultimate goal is enabling the process to deliver direct donations for the installation of solar energy systems. In the process, RPPR matches funding opportunities with community centers that will eventually become energy hubs during post-disaster relief and recovery efforts.

The community-centered process runs as a partnership with community leadership. RPPR provides technical support for the implementation of the design and installation of solar energy systems. Communities participate in capacity building aimed at outlining their post-disaster needs and priorities, developing a collective operations and maintenance plan, and defining an energy resilience agenda.

Through the Community Solar Energy Initiative we have collaborated with over 60 community groups providing essential services in communities across 21 municipalities. To date, we have installed 41 solar energy systems, with over 200 kW of power generation now managed through community leadership.

GENERATION CAPACITY (KW)
200+

In the hands of community leadership

RESILIENT ENERGY HUBS

41

In the hands of mutual aid centers.

DISTRIBUTED MUNICIPALITIES

21

From the west to the island municipalities Vieques & Culebra

SEP 2017



Hurricane María

OCT 2017-
FEB 2018



1. Centro Comunitario Buena Vista
2. Centro Comunitario Las Monjas
3. G-8 Headquarters

MAR-AUG
2018



4. Centro Comunitario El Coquí
5. Casa Verde
6. ATMAR
7. Comité Daguao
8. Centro Comunitario San Ciprián
9. Iglesia Virtud del Espíritu Santo
10. Centro Comunitario COSSAO
11. Pabellón de la Victoria

SEPT 2018-
FEB 2019



12. Boys & Girls Club - Loíza
13. IPPR Hogar 4
14. Iglesia Punta Santiago
15. FCH Vieques
16. CREAARTE Yabucoa
17. La Casa de Doña Here - AMPI

**MAR-AUG
2019**

- 18. Centro Comunitario Puente Blanco
- 19. La Casa de AMPI
- 20. Mujeres de Isla
- 21. Niños Nuevos Esperanza
- 22. Fundación de Culebra
- 23. La Casa de Junny - AMPI
- 24. S.E.R. de Puerto Rico - San Juan
- 25. CAPROMUNI II
- 26. CMTAS
- 27. Asociación Pro Juventud

**SEPT 2019-
FEB 2020**

- 28. Fortín de Radio Vieques
- 29. Iglesia Cristo Misionera
- 30. Capilla San Martín de Porres
- 31. Comunidad Rancho Grande
- 32. Vimenti
- 33. Mesón de Amor
- 34. JAC Cialitos
- 35. Primera Iglesia Bautista Río Piedras

**AUG 2020-
FEB 2021**

- 36. Armonía en la Montaña
- 37. Clínica Comunitaria COSSAO
- 38. Villa Pesquera Punta Santiago

**MAR 2021 -
PRESENT**

- 39. Coalición de Coaliciones
- 40. Coordinadora Paz para la Mujer
- 41. Mesón de Amor

— San Juan

Centro Comunitario Buena Vista Santurce

The Buena Vista Community Center is located in Caño Martín Peña. This sector emerged as the result of migration of families from rural to urban areas in search of access to better economic opportunities in San Juan. At this community center, they provide after-school, literacy, and other support programs for vulnerable populations.

GENERATION CAPACITY: 5.2 kW DC

STORAGE CAPACITY: 24 kWh

SPONSOR: Fundación Banco Popular de Puerto Rico



— San Juan

Centro Comunitario Las Monjas

The Hato Rey and Las Monjas Community Center serves as the main gathering location for residents in the southwestern and eastern sectors of Caño Martín Peña. Here, the community provides many cultural activities, such as community theater. During emergencies, it serves as a coordination and distribution center that connects this sector with internal and external resources.

GENERATION CAPACITY: 6 kW DC

STORAGE CAPACITY: 24 kWh

SPONSOR: Resilient Power Puerto Rico



— San Juan

G-8 Headquarters

The G-8 is a community-based organization grouping the leaders of eight communities that make up the larger area known as Caño Martin Peña. Their headquarters are located between San Juan's financial district and the Caño. This space is the center where the community groups' operations and outreach are coordinated, and it also serves as a reception center for people interested in visiting the communities.

GENERATION CAPACITY: 6 kW DC

STORAGE CAPACITY: 24 kWh

SPONSOR: Resilient Power
Puerto Rico



— Salinas

Centro Comunitario El Coquí

El Coquí Community Center is located in the southern municipality of Salinas, adjacent to the Bay of Jobos. It serves as the headquarters for the community board, as well as for IDEBAJO, a local non-profit organization supporting sustainable economic development through energy independence. They aim to serve as a hub promoting a clean energy model for communities across the region.

GENERATION CAPACITY: 5.2 kW DC

STORAGE CAPACITY: 24 kWh

SPONSOR: Fundación Segarra
Boerman e Hijos,
Inc.



— Maunabo

Casa Verde

Casa Verde is located in the municipality of Maunabo, next to one of the most important wetland reserves on Puerto Rico's southern coast. Casa Verde is the headquarters for The Maunabo Pro-Development Committee, a CBO focused on promoting community development through the conservation of natural resources. They aim to promote real, sustainable development alternatives for Maunabo and Puerto Rico's southeast region, and to facilitate environmental education programs in the region.

GENERATION CAPACITY: 5.2 kW DC

STORAGE CAPACITY: 24 kWh

SPONSOR: PRxPR
Para La Naturaleza



— Maunabo

Amigos de las Tortugas Marinas

ATMAR is located in the coastal municipality of Maunabo. This non-profit organization promotes the conservation of sea turtle nesting areas, and champions a sustainable tourism model for community development. The facility hosts educational activities, a small museum, and lodging facilities for visiting researchers.

GENERATION CAPACITY: 5.2 kW DC

STORAGE CAPACITY: 24 kWh

SPONSOR: PRxPR
Para La Naturaleza



— Naguabo

Comité de Desarrollo Social y Cultural de Daguao

Located in Naguabo, the center serves a community of more than 750 households, as well as several churches and businesses. It houses the headquarters of the community board, responsible for leading advocacy efforts to improve access to security, education, health, and economic development opportunities for its residents. The Daguao Social and Cultural Committee played a key role in relief efforts after Hurricane María.

GENERATION CAPACITY: 5.2 kW DC

STORAGE CAPACITY: 24 kWh

SPONSOR: PRxPR
Para la Naturaleza



— San Juan

Centro Comunitario San Ciprián

The community of San Ciprián takes its name from the hurricane that devastated Puerto Rico in 1932, which forced many displaced families to relocate. Many families still face challenges due to the lack of proper sanitary and storm drainage infrastructure. Today, this community is part of a larger network known as G-8.

GENERATION CAPACITY: 5.2 kW DC

STORAGE CAPACITY: 24 kWh

SPONSOR: Natural Resources
Defense Council
G8



 San Juan

Iglesia Virtud del Espíritu Santo

Iglesia Virtud del Espíritu Santo, led by pastor Miriam García, is a church located in the heart of Playita, between Shangai and El Checo, a historically marginalized sector on the shorelines of Los Corozos Lagoon. In the aftermath of Hurricane María, its central location served as an ideal resilience hub. There, residents coordinated the distribution of essentials such as prepared food and hygiene supplies, and held community clinics and cultural events.

GENERATION CAPACITY: 1.5 kW DC

STORAGE CAPACITY: 6 kWh

SPONSOR: Rockefeller Foundation



 Utuado

COSSAO Centro Comunitario

COSSAO's Community Center serves its residents with multiple functions. It became a temporary clinic after María, when the principal clinic was not available, it serves as a cultural and educational event center, and it provides a place for internal and external resource coordination. It is located in the Barrio Mameyes neighborhood, in the mountainous municipality of Utuado.

GENERATION CAPACITY: 5.2 kW DC

STORAGE CAPACITY: 24 kWh

SPONSOR: Fundación Segarra Boerman e Hijos, Inc.



— Ponce

Pabellón de la Victoria

Pabellón de La Victoria is located in Valles Torres a community in Ponce, the largest city on Puerto Rico's southern coast. This CBO focuses on afterschool programming and education, as well as leading the community's efforts to drive the area's economic development. After Hurricane María, the church's facilities served as a relief hub and distribution center for incoming supplies and medicines.

GENERATION CAPACITY: 5.2 kW DC

STORAGE CAPACITY: 24 kWh

SPONSOR: ACACIA Network



— Loíza

Boys & Girls Club - Loíza

The Boys and Girls Club Center in Loíza, one of Puerto Rico's most exposed and underserved municipalities on the northern coast, provides direct services for vulnerable populations. Located in a rehabilitated school, their mission is to enable all young people to reach their full potential as productive, caring, and responsible citizens.

GENERATION CAPACITY: 5.2 kW DC

STORAGE CAPACITY: 24 kWh

SPONSOR: Fundación Banco Popular de PR



 Bayamón

Instituto Psicopedagógico de Puerto Rico

IPPR is located in the municipality of Bayamón, in the metropolitan area. This non-profit supports people with intellectual disabilities by providing safe housing alternatives, educational programming, and integrated services.

GENERATION CAPACITY: 5.2 kW DC

STORAGE CAPACITY: 12 kWh

SPONSOR: ConPRometidos



 Humacao

Parroquia Nuestra Señora del Carmen

Parroquia Nuestra Señora del Carmen is located in Punta Santiago, a neighborhood in the southeastern municipality of Humacao. Home to one of the most biodiverse areas in Puerto Rico, it faces the constant threat of natural disasters. The local parish led relief efforts in the community following the catastrophic storm surge caused by Hurricane María in the fishing village of Punta Santiago.

GENERATION CAPACITY: 5 kW DC

STORAGE CAPACITY: 24 kWh

SPONSOR: ACACIA Network



— Vieques

Fideicomiso de Conservación e Historia de Vieques

The Vieques Conservation Trust is located on the island of Vieques, off the east coast of Puerto Rico. This non-profit organization fosters, protects, and conserves the environmental, archaeological, and cultural resources of the island. It strives to preserve and study Vieques' bioluminescent bays and support a broad array of educational programs through lectures, educational exhibits, seminars, publications, technology resources, and a scholarship program.

GENERATION CAPACITY: 5 kW DC

STORAGE CAPACITY: 24 kWh

SPONSOR: Para la Naturaleza



— Yabucoa

CREATE Yabucoa

CREATE is located in the southeastern municipality of Yabucoa. The organization centers around youth programming, offering an alternative space for adolescents to develop their emotional and social potential through art, recreational activities, and fostering a lifelong commitment to learning.

GENERATION CAPACITY: 5.2 kW DC

STORAGE CAPACITY: 24 kWh

SPONSOR: Fundación Banco Popular de Puerto Rico



 Mayagüez

La Casa de Doña Here - AMPI

La Casa de Doña Here is one of the residential homes administered by the Asociación Mayagüezana de Personas con Impedimentos, Inc. (AMPI). They provide accommodations for adults with severe intellectual disabilities who require assistance 24 hours a day. The staff works to provide stability in their daily lives, which promotes tranquility and wellbeing, and fosters their development as independent citizens.

GENERATION CAPACITY: 5.2 kW DC
 STORAGE CAPACITY: 12 kWh
 SPONSOR: ConPRmetidos



 Cataño

Centro Comunitario Puente Blanco

La Comunidad Organizada de Puente Blanco, Inc. is in the coastal municipality of Cataño. With the cooperation of local volunteers, the Community Center provides educational services to participants in the community, and coordinates services that address their most pressing needs. These include food distribution among neighbors during emergencies, health-related workshops, and administrative services to those without computers.

GENERATION CAPACITY: 5.2 kW DC
 STORAGE CAPACITY: 24 kWh
 SPONSOR: Fundación Segarra Boerman e Hijos, Inc.



 Mayagüez

La Casa de AMPI

La Casa de AMPI, Inc. is one of the residential homes administered by the Asociación Mayagüezana de Personas con Impedimentos, Inc. (AMPI). They provide assisted living to low-income male adults with intellectual disabilities to promote their development as independent citizens. Each resident receives medical management, transportation, recreational activities, case manager assistance, and housekeeping, among other healthcare services.

GENERATION CAPACITY: 5.2 kW DC
 STORAGE CAPACITY: 12 kWh
 SPONSOR: ConPRmetidos



 Culebra

Mujeres de Islas

Mujeres de Islas, Inc., organized under SEVA (Sede de Experiencias Vivas de Aprendizaje), serve their own community in Culebra. Their mission is founded on the premise that wellbeing and health open the path for the accumulation of knowledge and the sustainability of the island of Culebra. They currently run an island-wide holistic and alternative capacity building program.

GENERATION CAPACITY: 5 kW DC
 STORAGE CAPACITY: 21 kWh
 SPONSOR: PRxPR



 Toa Baja

Niños Nueva Esperanza

Niños Nueva Esperanza, Inc. serves the small community of Sabana Seca in the coastal municipality of Toa Baja. They thrive to break detrimental social cycles in their communities with a preventive methodology that leverages strengths found in the community. Currently, they provide tutoring services, psychosocial aid, sports, and artistic activities for youths.

GENERATION CAPACITY: 5.2 KW DC

STORAGE CAPACITY: 24 KWh

SPONSOR: ACACIA Network



 Culebra

Fundación de Culebra

Fundación de Culebra, Inc. is located on the island of Culebra, off the east coast of Puerto Rico. They seek to know, protect, and promote Culebra's culture, community, and environment with the belief that this creates a sense of value and promotes self-management. The organization also protects their natural resources for present and future generations.

GENERATION CAPACITY: 5 kW DC

STORAGE CAPACITY: 21 kWh

SPONSOR: Para la Naturaleza



— Mayagüez

La Casa de Junny - AMPI

La Casa de Junny, Inc., is the first home founded by AMPI for people with intellectual disabilities. It was named after the Executive Director's older brother, who suffered from cerebral palsy. His condition and housing needs helped to shed light on the fact that people with disabilities are unable to reside in conventional nursing homes, resulting in a legal shift that created innovative services for one of the most vulnerable and underserved populations in Puerto Rico.

GENERATION CAPACITY: 5.2 kW DC
STORAGE CAPACITY: 12 kWh
SPONSOR: ConPRmetidos



— San Juan

S.E.R. de Puerto Rico

Sociedad de Educación y Rehabilitación (SER) is an island-wide organization with offices in San Juan, Ceiba, and Ponce, that provides services for persons with disabilities, which include medical attention, therapies, and education, with the aim of maximizing their potential. SER was founded in 1950 as the first holistic rehabilitation center for this population and has pursued the development of an inclusive society.

GENERATION CAPACITY: 10 kW DC
STORAGE CAPACITY: 16 kWh
SPONSOR: Fundación Banco Popular de Puerto Rico



 Mayagüez
CAPROMUNI II

CAPROMUNI II was created to help women, men, children, LGBTQ Community members, immigrants, mental health patients, and elderly persons overcome gender-related violence. It provides temporary shelter for up to 90 days, crisis intervention, mental health evaluation and treatment, individual and group counseling, psychological services, nursing services, and support in a safe, healthy, and loving environment.

GENERATION CAPACITY: 5.2 kW DC
 STORAGE CAPACITY: 12 kWh
 SPONSOR: ConPRmetidos



 Yauco

**Centro de
 Microempresas
 y Tecnologías
 Agrícolas
 Sustentables de
 Yauco (CMTAS)**

The Centro de Microempresas y Tecnologías Agrícolas Sustentables de Yauco Inc. (CMTAS) is a nonprofit corporation that operates in Yauco, a municipality in the southwest of Puerto Rico. CMTAS brings together a diverse array of partners, including a community-based organization, higher education, the agricultural private sector, local government, and other nonprofits. Their focus is on the development and maintenance of agricultural microbusinesses in communities that struggle with socioeconomic disadvantages.

GENERATION CAPACITY: 5.2 kW DC
 STORAGE CAPACITY: 24 kWh
 SPONSOR: Fundación Banco Popular de Puerto Rico



 Cataño

Asociación Pro Juventud y Comunidad Barrio Palmas de Cataño

The Asociación Pro Juventud y Comunidad Barrio Palmas, Inc. is located in Cataño. It was founded in 1984 by a group of community members who were concerned with high levels of social grievances, such as truancy and drug abuse, among others. Today, they serve youths with extracurricular activities and workshops that promote economic development within their communities.

GENERATION CAPACITY: 5.2 kW DC

STORAGE CAPACITY: 12 kWh

SPONSOR: Fundación Banco Popular de Puerto Rico



 Vieques

Fortín de Radio Vieques

Radio Vieques is a community nonprofit radio station on the island of Vieques, with a bandwidth that reaches Culebra, another island to its north. It is focused on education, justice, and peace. Their services are critical to maintain communications with its neighboring islands and mainland Puerto Rico.

GENERATION CAPACITY: 10 kW DC

STORAGE CAPACITY: 24 kWh

SPONSOR: Natural Resources Defense Council
Resilient Power
Puerto Rico



— San Juan

Iglesia Cristo Misionera

Iglesia Cristo Misionera, a church led by pastor Noelia Martínez and co-pastored by Ramón Rosario, serves as a community hub during emergencies. In the aftermath of Hurricane María, they served food and provided essential supplies. More recently, with the COVID-19 emergency, they distributed boxes of fresh food to community members. In times of power outages, the location has become a power hub to connect small electronic devices, thanks to the Solar Hub program.

GENERATION CAPACITY: 1.5 kW DC

STORAGE CAPACITY: 6 kWh

SPONSOR: Rockefeller Foundation



— San Juan

Capilla San Martín de Porres

San Martín de Porres is a chapel in the heart of Playita, a historically marginalized community on the shorelines of Los Corozos Lagoon. The chapel is part of the larger parish of Barrio Obrero. After María, San Martín served as a community hub and had a cistern installed by Waves4Waves to serve as a source of water for Playita's residents.

GENERATION CAPACITY: 1.5 kW DC

STORAGE CAPACITY: 6 kWh

SPONSOR: Rockefeller Foundation



 Naguabo

Comunidad Rancho Grande

Comunidad Rancho Grande, Inc. is located in Maizales, a small community of about 2,000 residents in the mountainous municipality of Naguabo. They have managed their own community aqueduct since 1960, built by the community with government aid. Their efforts have led to their community's sustainability, its social and economic wellbeing, and the preservation of their natural resources.

GENERATION CAPACITY: 5 kW DC

STORAGE CAPACITY: 21 kWh

SPONSOR: Para la Naturaleza



 San Juan

Vimenti por Boys & Girls Club de Puerto Rico

Vimenti is an initiative of Boys & Girls Clubs de Puerto Rico, located in San Juan. Vimenti is an education-based center. They operate a school that provides afterschool educational programs for primary school students. They also provide support for university studies, economic and business development, and social skills programs. This space serves the broader community with access to computers and other orientation-related services.

GENERATION CAPACITY: 5.2 kW DC

STORAGE CAPACITY: 24 kWh

SPONSOR: Fundación Banco Popular de Puerto Rico



 San Juan

Mesón de Amor

Mesón de Amor, Inc. is a nonprofit corporation with strong ties to faith-based organizations, located in Río Piedras, a neighborhood of San Juan. Ever since its founding in 2011 with the efforts of volunteers, they provide warm food and supplies daily, at no cost, to dozens of university students and residents with limited resources in the area.

GENERATION CAPACITY: 15.5 kW DC

STORAGE CAPACITY: 32 kWh

SPONSOR: Para la Naturaleza + Lowenstein



 Ciales

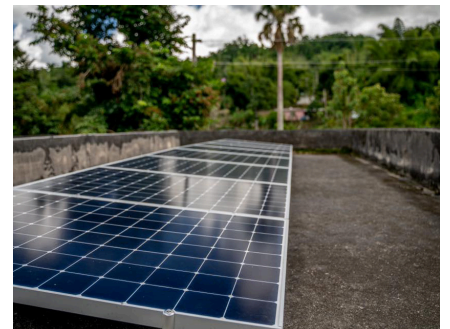
Junta de Acción Comunitaria Cialitos

Junta de Acción Comunitaria Cialitos, Inc., operates in the municipality of Ciales, located in the mountainous region of Puerto Rico. It was founded by local neighbors who rescued abandoned facilities and use them to share knowledge and work together to improve their community of about 1,200 residents.

GENERATION CAPACITY: 5.2 kW DC

STORAGE CAPACITY: 27 kWh

SPONSOR: PRxPR
Para la Naturaleza



 San Juan

Primera Iglesia Bautista de Río Piedras

The Primera Iglesia Bautista de Río Piedras is a church located in the heart of San Juan, founded in 1899. It is dedicated to its local community, serving as a home for the elderly and persons with disabilities, a preschool and elementary school, and a parking area for local students and businesses, among other functions. In the aftermath of Hurricane María, they coordinated and distributed food and resources to the local community.

GENERATION CAPACITY: 5.2 kW DC

STORAGE CAPACITY: 16 kWh

SPONSOR: Para la Naturaleza



 Aibonito

Armonía en la Montaña

Armonía en la Montaña, Inc. is an farmer-led, education-based nonprofit corporation located in the mountainous region of Aibonito that works under HASER, Inc. as their fiscal agent. Armonía seeks to make the right to holistic wellbeing and a just society attainable through agro-culture-ecology. Their educational programs and network formation efforts support the economic sustainability of small farms in the area.

GENERATION CAPACITY: 10.4 kW DC

STORAGE CAPACITY: 24 kWh

SPONSOR: Commission for Environmental Cooperation, NAPECA



 Utuado

COSSAO Clínica Comunitaria

COSSAO's Community Clinic provides free health services and affordable medicine to its residents. It is administered by the Corporación de Servicios de Salud Primaria y Desarrollo Socioeconómico El Otoao, also known as COSSAO, which is a community-based organization that brings together people from different communities in the area.

GENERATION CAPACITY: 17 kW DC

STORAGE CAPACITY: 27 kWh

SPONSOR: Commission for
Environmental
Cooperation,
NAPECA



 Humacao

Villa Pesquera de Punta Santiago

Pescadores Unidos de Punta Santiago Humacao, Inc. is a group of committed local fishermen that promotes economic and social development in the community. They formally incorporated in 2011 and continue as a movement that seeks the fair treatment of fishermen, which is in the best interest of the community as a whole. Aside from their daily work of fishing, they are dedicated to educational and cultural activities that promote a collective consciousness.

GENERATION CAPACITY: 5.6 kW DC

STORAGE CAPACITY: 13 kWh

SPONSOR: ConPRmetidos



Caguas

Coalición de Coaliciones

Coalicion de Coaliciones is a non-profit organization that coordinate projects for people without housing since 2003. They have services and projects in 54 municipalities throughout Puerto Rico. Some of their projects include HMIS Conexión Boricua, Sistema Coordinado de Entrada y la Clínica Alternativa Integrada. .

GENERATION CAPACITY: 6.3 kW DC

STORAGE CAPACITY: 14 kWh

SPONSOR: Lowenstein



San Juan

Coodinadora Paz para las Mujeres

Coordinadora Paz para las Mujeres is a coalition of organizations and peoples working with women facing some type of violence. The coalition works to increase gender equity, promote human rights, and prevent violence through coordination with its partners and community.

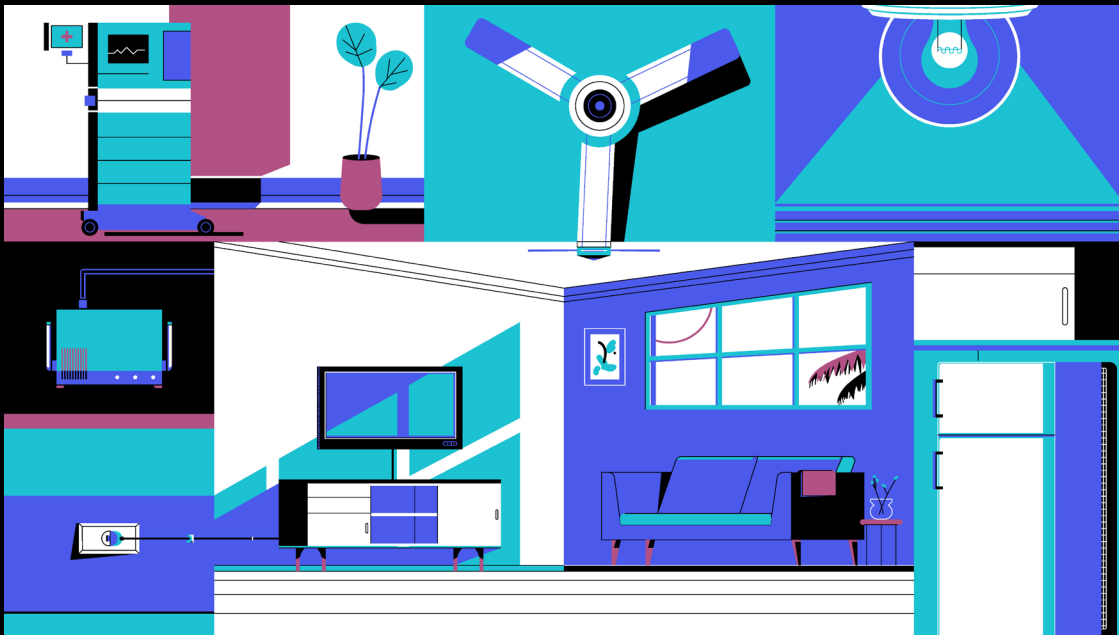
GENERATION CAPACITY: 10 kW DC

STORAGE CAPACITY: 24 kWh

SPONSOR: Lowenstein



FACILITATE



RPPR is committed to facilitating open access to the necessary knowledge bases and project development skills needed to actively engage local and community leadership in recovery and reconstruction processes. Our aim is to replicate the community solarization model, as well as scale up and amplify our impact by supporting the development of an increasing number of high-quality locally driven solar energy system proposals.

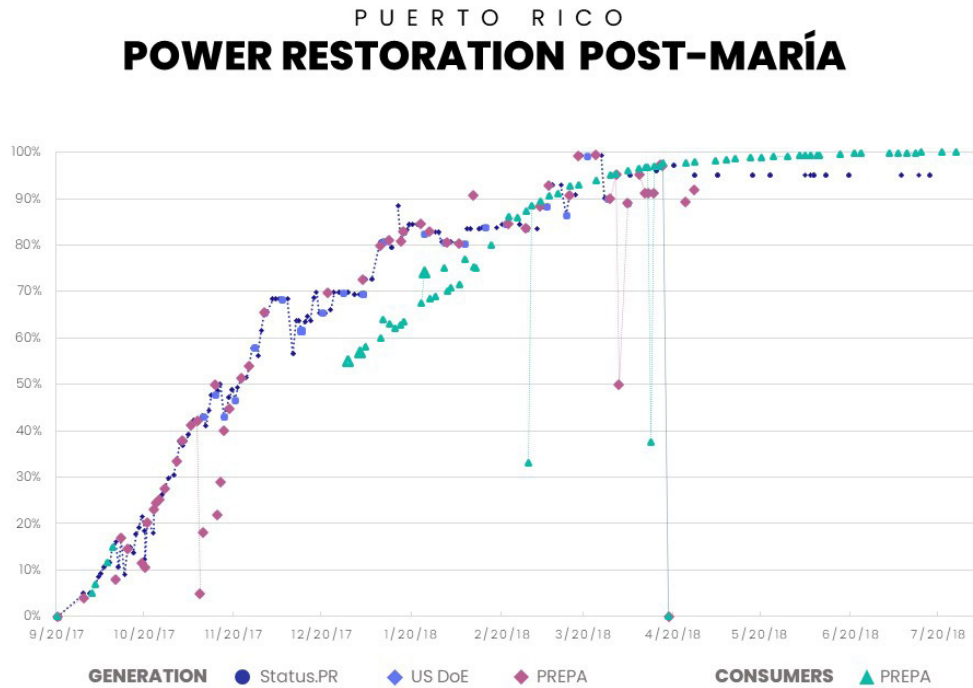
DATA & KNOWLEDGE

Co-developing learning
tools for equitable
climate adaptation.

PUERTO RICO ENERGY TOOLKIT

The first step for equitable climate adaptation is having access to the knowledge bases and tools to assess communities' vulnerability to hazards and their energy needs. To this end, RPPR produced three (3) robust datasets.

The first dataset documents exposure to hazards, essentially mapping out the proportion of the population exposed to each of Puerto Rico's four (4) main natural hazards: flooding, tsunamis, storm surges and landslides. Additionally, we mapped exposure to blackouts by creating two datasets that document the post-Maria power restoration process over time and space.



The power restoration curve was generated using 641 entries from three official sources: Puerto Rico Electric Power Authority (PREPA) statements in the press and social media; US Department of Energy Situation Reports; and the government of Puerto Rico's status.pr webpage. This dataset charts the critical milestones of power restoration, revealing that more than 44 percent of consumers entered the New Year without power and that nearly six months went by before power was restored for the final 30 percent of consumers, among other facts.

DATA ENTRIES

1,500

Documenting Puerto Rico's power restoration

The team also mapped the restoration of power at the barrio and sector levels for the final 30 percent of consumers by georeferencing PREPA's tweets starting 130 days after Maria's landfall. Overlaying this information with income data reveals the fact that the most underserved communities faced the longest restoration times.

The second data set measures sensitivity to natural hazards, such as income level and number of dependents. Lastly, the third dataset measures adaptation capitals, ranging from access to internet to distance from major roads and essential services.

WORKSHOPS

8

Supporting community education regarding vulnerability and renewables

The Puerto Rico Energy Toolkit, developed in partnership with Rocky Mountain Institute, consisted of an interactive, web-based platform providing community leadership, academics, and investors with access to these important datasets.

VARIABLES

15

Downloadable datasets with community data across three dimensions

Specifically, the Community Climate Vulnerability Tool allowed users to select census block groups on a map and produce a report documenting their community's vulnerability based on fifteen (15) variables across three dimensions (exposure, sensitivity, and adaptation capitals). The Tool sought to provide community-based and grassroots organizations with up-to-date data and information to assess their adaptation needs, generate an evidence-based narrative around their vulnerability, and meaningfully engage in recovery efforts.

SOLAR ENERGY INCUBATION PROGRAM

Co-learning to reimagine
and adapt in the face of
climate change.

SOLAR ENERGY INCUBATOR

The Solar Energy Incubator Program seeks to improve resilience by fostering the development of renewable energy microgrids. In our first round, community-based organizations received training and technical assistance to better understand their energy needs, design critical load energy systems, and develop funding proposals. Workshops cover topics that range from improving our understanding of communities' climate vulnerability, to learning how to audit and documenting facilities' energy needs, and developing personalized solar energy system proposals.

A total of sixteen (16) organizations participated in the first round of the program, eleven (11) proposals were fully developed, and three systems have received funding for their proposed solar energy systems, with a fourth organization using the proposal to implement an already funded project. Two of the projects were funded under the Commission for Environmental Cooperation's NAPECA Grant Program, and implemented under RPPR's CSEI.

INCUBATOR PARTICIPANTS

16

Received training & technical assistance under the Solar Energy Incubator Program

PROPOSALS FUNDED TO DATE

3

Received funding from Incubator proposals

TOTAL FUNDING RECEIVED

120K

Funding for Solar Incubator projects

— Moca

AYANI

Centro de Ayuda y Terapia al Niño con Impedimentos, Inc. (AYANI) is located in the municipality of Moca. AYANI aids around 2,700 children and young adults with developmental disabilities, intervening as early as possible so they can grow independently. Their services also support parents and the wider community. To solarize their facilities with critical loads would require a system with 80 kW of generation and 33 kWh of storage capacity.



— Las Marías

**Centro de Apoyo
Mutuo Bucarabones
Unidos**

Centro de Apoyo Mutuo Bucarabones Unidos, Inc. is a community-based organization located in Bucarabones, a remote and mountainous community in Las Marías. Founded in the aftermath of Hurricane María, the organization continues to serve its community with educational programs and with the coordination of external resources to address local needs. To solarize their facilities with critical loads would require a system with 16 kW of generation and 8 kWh of storage capacity.



 Lares

Centro de Apoyo Mutuo Jíbaro de Bartolo

Centro de Apoyo Mutuo Jíbaro de Bartolo, Inc. is a community-based organization located in Bartolo, a remote and mountainous community in Lares. Founded in the aftermath of Hurricane María in 2017 as a response effort, they repurposed an abandoned school into a shelter which ultimately became a house for these community members. The center also serves as a place to coordinate resources for the community.



 Añasco

Comité Comunal de Corcovada

Comité Comunal de Corcovada, Inc. serves the small, isolated, mountainous community of Corcovada Arriba, in Añasco. Since the early 1960s, the organization governs and manages its own community aqueduct, which today serves around 160 households. Currently, they coordinate external resources to address local needs and provide educational and healthcare services. After Hurricane María, the committee developed a resilient hub to serve its community and those around it.



 Moca

Complejo Residencial Edad Dorada

Complejo Residencial Edad Dorada is located in the municipality of Moca. Since 2008, the Complejo offers 30 independent residencies to people 60 or older with low and very low economic resources. It is committed to the provision of high-quality housing services that contribute to the improvement of the residents' wellbeing. They participated in the Incubator program. To solarize their facilities with critical loads would require a system with 132 kW of generation and 90 kWh of storage capacity.



 Trujillo Alto

Cooperativa de Vivienda Ciudad Universitaria

Cooperativa de Vivienda Ciudad Universitaria is located in Ciudad Universitaria, in Trujillo Alto. It houses 355 families and offers multiple services that promote a just and healthy lifestyle. This includes a community vegetable garden, common areas for laundry, recreational areas for sports and activities. A rainwater catchment system for the vegetable garden is currently in the works. They participated in the Incubator program. To solarize their facilities with critical loads would require a system with 352 kW of generation and 102 kWh of storage capacity.



— Loíza

Corporación Piñones se Integra

Corporación Piñones se Integra (COPI) is a community-based nonprofit organization located in the coastal community of Piñones, Loíza. Founded in 1999, their aim is to exalt the cultural values of people of African descent and the protection of local natural resources. Their focus is on educational programs and socioeconomic development. To solarize their facilities with critical loads would require a system with 6.7 kW of generation and 7 kWh of storage capacity.



— Aguadilla

Fundación Superhéroes

Fundación Superhéroes is located in the town of Aguadilla. It serves children with functional diversity either in schools or in their homes. They provide specialized therapies that include speech, occupational, aquatic, psychological, auditory processing, dysphagia, and education. They also aid parents with legal assistance. They are currently using the proposal they created in the Incubator Program to acquire funds for the acquisition of a solar energy system.



Ponce

Hogar Rey de Luz

Hogar Rey de Luz, Inc. is located in Ponce. It is a low-cost home for the elderly and people with disabilities. It offers 24/7 service, personal care, nurse's services, healthy food and meals, and scheduled medical visits and medicine distribution, among other things required for the wellbeing of every resident. To solarize their facilities with critical loads would require a system with 32 kW of generation and 41 kWh of storage capacity.



Ponce

La Casa de Arte y Cultura de la Playa de Ponce

La Casa de Arte y Cultura de la Playa de Ponce, Inc. is located in Ponce. Its aim is to be an open space for cultural, historic, and artistic exchange between national and international artists, young people, and the general community. It is focused on artistic and historic education, as well as on the promotion of networking between artists and the community. To solarize their facilities with critical loads would require a system with 4.5 kW of generation and 19 kWh of storage capacity.



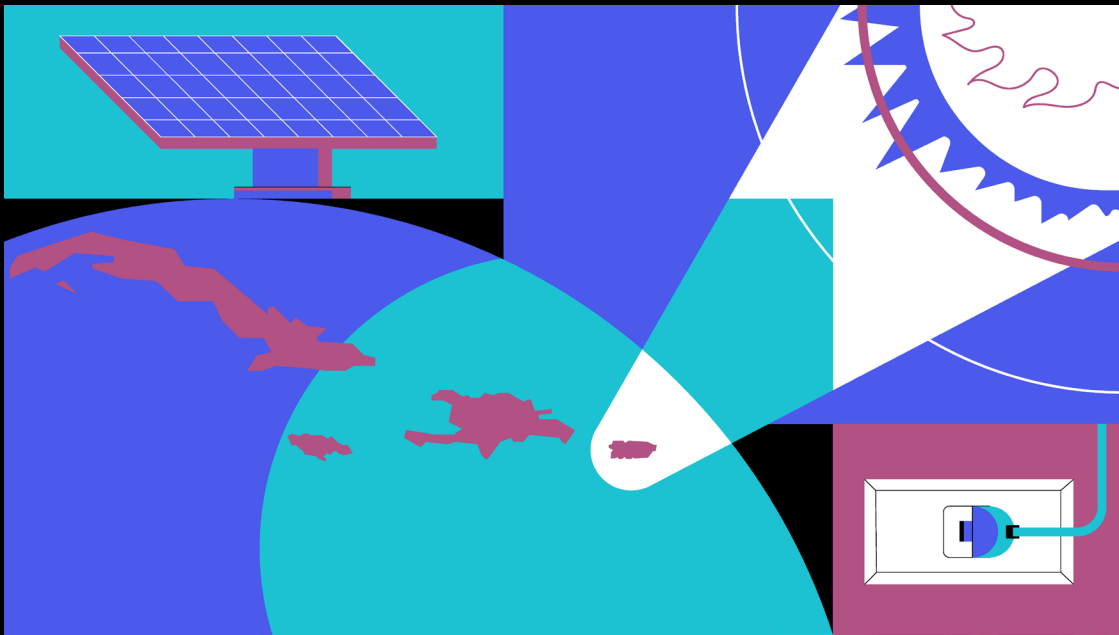
— Yabucoa

Sector El Veinte

Sector el Veinte, Inc. is a community-based organization located in Guayabota, an isolated community in the mountainous municipality of Yabucoa. They govern and manage their own aqueduct, but they face major challenges in terms of local development, due to their location and their political and geographical isolation.



CURRENT PROGRAMS



Building on the lessons learned over our first four years, RPPR will continue strengthening local leadership’s capacities to develop, implement, and manage solar energy projects. We will continue to work in three key action areas: **Facilitate** solar power development in communities, using a social innovation lab approach that will include our solar energy incubator program and IlumiNaciónPR.com; scale up to **Invest** in solar energy systems across service provider networks partnering with us; and develop a portfolio to **Activate** our network of collaborators and collectivize the expansion of community-driven distributed solar energy microgrids.

RED
DE
REDES

Strengthening local control of adaptation resources alongside Puerto Rico's marginalized communities and groups.

CONTEXT

Our recent experience tells us that Puerto Rico's most vulnerable populations have been disproportionately impacted by recent natural and man-made disasters.

Specifically, multiple studies have found evidence of an increase in gender violence throughout Puerto Rico following Hurricane María and during the COVID pandemic. Moreover, the lack of sufficient transitional and emergency housing to address housing insecurity was apparent following the earthquakes of early 2020, with many of those impacted yet to find permanent housing solutions.

RED de REDES (Network of Networks) is focused on the development of solar energy systems for service provider networks that offer essential services and safe shelter for survivors of gender violence and unhoused populations.

Working in partnership with the Natural Resources Defense Council (NRDC), Coordinadora Paz para la Mujer and Coalición de Coaliciones, we also seek to explore mechanisms for the collectivization of solar energy micro-grid development with our partner networks.

Together we aim to strengthen the networks' capacities to reinvest in solar energy and increase the resilience of their service providers. The program is funded with blended financing from The Boston Foundation and the Leon J. Lowenstein Foundation.

OUR GOALS

RPPR aims to facilitate participating entities' access to the tools and resources necessary to respond, recover, rebuild and prosper in the face of climate change.

To this end we are supporting them and the populations they serve as they develop strategies and bring together the resources to reduce their vulnerability to natural and anthropogenic disaster and extreme events. We believe that access to decentralized solar energy:

- Reduces exposure to blackouts, offering independence from the centralized fossil-fueled energy system.

- Reduces sensitivity to the impact from disasters, offering reliable and stable access to energy and helping guarantee the continuity of service provision.

- Increases access to adaptation capitals, placing control of energy resources directly in the hands of local leaders and their communities.

THE PROGRAM

RED de REDES has three blocks, running between July and December of 2021.

Block 1 | Facilitate

Participating entities (10 to 12) will complete the Solar Energy Incubation Program, supporting their development of ready-to-fund solar energy system proposals. Participants will engage in co-learning sessions and will receive one on one technical assistance to develop a narrative of their climate adaptation needs, assess their energy consumption and critical loads, and develop conceptual designs for their optimal solar energy systems.

Block 2 | Invest

During a first round of investment, we will work on the installation of 2-3 solar energy systems in San Juan. To reiterate our commitment to gender equity, technical assistance and project management activities will run under RPPR's Internship program with civil engineering graduates from the UPR's RUM, in partnership with Girls in Civil.

Block 3 | Activate

Finally, we will bring together the solar energy system proposals in a social impact investment portfolio and launch a joint fundraising effort. The campaign will be a first step towards exploring collective action for the development of solar energy systems.

OUR PARTNERS

Coordinadora Paz para la Mujer

Coordinadora Paz para la Mujer is a non-governmental organization that brings together a pioneering coalition committed to the eradication of domestic violence and sexual abuse in Puerto Rico. Coordinadora brings together emergency shelters, essential service providers, universities, feminist organizations and human rights activists working to address violence against women.

Coalición de Coaliciones Pro Personas sin Hogar

Coalición de Coaliciones is an organization committed to improving quality of life for unhoused and other vulnerable populations by applying evidence-based practices and advocating for their right to live in health, wellness and full enjoyment of their dignity. Coalición brings together a network of service providers, including case managers, social workers, housing placement services, and medical treatment for conditions related to substance abuse and behavioral health.

Natural Resources Defence Council

The Natural Resources Defence Council (NRDC) is a non-profit organization working to protect the planet, its people, plants and animals, and the natural systems all forms of life depend on. With more than three million members and activists, NRDC has worked tirelessly for the protection of the planet's natural resources, public health and the environment since 1970.

COORDINADORA PAZ PARA LA MUJER

Casa de la Bondad

Casa de la Bondad is a non-profit organization that provides emergency shelter and specialized services to women and minors who are victims and survivors of domestic violence.

Casa Protegida Julia de Burgos

Established in 1979, Casa Protegida Julia de Burgos was Puerto Rico's first shelter for women survivors of domestic violence. Casa Julia provides shelter services, programs for children, temporary housing, permanent housing, and ambulatory services.

Hogar Ruth

For 37 years, Hogar Ruth has developed and established new programs and services in aid of victims of domestic violence, sexual assault, stalking, and dating violence. Hogar Ruth also offers community education geared toward the prevention of violence against women, as well as breaking the cycle of domestic violence.

Mujeres de Islas

Mujeres de Islas is a community-based non-profit organization with the mission to identify resources and create projects that promote a transformative culture of peace and education geared toward the emotional health and the cultural, environmental, and socioeconomic development of Culebra. Their services include an Emergency Management and Disaster Administration Bureau, Community Hub, and Food Bank Program.

YWCA

YWCA provides support to women and girls, emphasizing empowerment in their communities, in the workforce, and at home. YWCA offers a variety of services such as summer camps and tutoring programs, as well as classes in home economics, gardening, physical fitness, and more.

COALICIÓN DE COALICIONES

Casa Cultural Ruth Hernández

La Casa Cultural Ruth Hernandez is a cultural and community organization in the Río Piedras neighborhood of San Juan. This space in the inner city serves as a meeting point for community members and for organizations promoting local development.

CAUCE

Centro de Acción Urbana, Comunitaria y Empresarial promotes the physical, social, and economic revitalization of Río Piedras through collaboration with community organizations and businesses. CAUCE provides education services to children and adults, responds to the needs of surrounding communities, and liaises with government agencies.

Hogar Fortaleza del Caído

Hogar Fortaleza del Caído serves people who are unhoused, living with mental health issues, living with HIV/AIDS, and single mothers living with their children. It also provides services such as case management, mental health and addiction counseling, daycare, permanent and temporary housing, emergency shelter, transportation, spiritual support, and emergency assistance.

Mesón de Amor

Mesón de Amor is a non-profit organization that provides food and housing to university students. Through their programs, young, disadvantaged university students are provided secure housing, mental health services, social coordination services, support with actions aimed at improving their quality of life, nutrition, and more.

Hogar Luz de Vida

Hogar Luz de Vida provides services to unhoused persons in Mayagüez and surrounding towns. It has partnered with Coalición de Coaliciones and the Department of Family Services in Puerto Rico's census of unhoused persons in 2015.



LUMI, NACIÓN PR.COM

A home-grown platform
to facilitate the adoption
of renewable energy
throughout Puerto Rico.

ONLINE LEARNING PLATFORM

RPPR's work on knowledge and data will be relaunched under **ilumiNaciónPR.com**, an interactive web-based platform designed to support communities' adoption of solar energy throughout Puerto Rico.

The Community Vulnerability Tool, a geofenced tool, will allow local leadership to identify community boundaries and generate a full report with estimates and graphs measuring local conditions across three key dimensions: exposure, sensitivity and access to DRR capitals.

Community leaders can assess their climate adaptation needs and use these assessments for resilience planning and fundraising. In turn, potential donors can assess the potential social impact of their investments and use the tool to prioritize their donations.

Our work on the new platform will focus on:

- Simplifying the user interfaces (UI) and user experiences (UX) for ease of use and access

- Expanding the original dataset to include further hazards and disaster risk reduction capitals

- Running train-the-trainer workshops to scale up the dissemination and use of tools

- Developing applications directly tied to solar energy system adoption

ENERGY AUDITING APP

RPPR's latest tool is an online **Energy Auditing App** designed to help individuals and organizations understand how they consume energy and assess their energy needs.

Users create an inventory of their electric appliances from a total of 156 options in six categories: lighting, entertainment, refrigeration, maintenance, kitchen, and personal use. They then define how many of each appliance they have, as well as their hours of operation.

Using an extensive dataset developed by our Team, the **App** estimates energy consumption by equipment type and category. Using the inputted consumption data, it also measures costs under current utilities pricing in Puerto Rico, energy efficient appliance alternatives, and potential savings if the more efficient alternative is used.

Finally, users can download a detailed report with their full inventory of appliances and energy consumption details. This report provides an organization's total and critical energy needs, which is the foundation for estimating optimal solar energy system sizes.

The goal is to support users and organizations in their decision-making regarding:

- Strategies to reduce consumption, as well as their carbon footprint

- Trade-offs of retrofitting vs purchasing energy efficient appliances

- Optimal solar energy system size based on critical loads

Academic Collaborations



Partners



Press

The
New York
Times

CNN



WIRED



INTERIOR
DESIGN

ARCHITECTURAL
RECORD



EL PAÍS

THE
ARCHITECTS
NEWSPAPER



EL DIARIO VASCO



el Nuevo Herald



The Miami Herald

EjePrime



THE REAL DEAL
NEW YORK REAL ESTATE NEWS

SCENARIO
JOURNAL

BOSTON COMMON
MAGAZINE



FAST COMPANY



Architizer



161 Calle San Jorge
San Jorge, PR 00911

Web: resilientpowerpr.org

Email: info@resilientpowerpr.org